

# QUICK MANUAL AUDI MMI 3G

## 1.Introduction

**JRDAB-01** device is a **DAB/DAB+** radio receiver. It is designed to receive digital radio stations in vehicle equipped with digital sound system. **JRDAB-01** supports the **"following service"** function.

## 2.Start Up

**Warning!** JRDAB -01 device is controlled from MMI control panel buttons.

To start listening of digital radio stations from **DAB/DAB+** radio receiver, press the **RADIO** button on MMI control panel, ① then press the button which controls WAVE BAND function. ② Fig.1

Select DAB from list of available wave bans. Fig.2



Fig. 1



Fig. 2

### 3. Selecting and changing

**Warning!** At first start up of device run a SCAN function to search new stations and add them to list.

Dab radio stations are broadcasted in blocs called multiplex, each multiplex include up to 32 stations. Station list is displayed in form of Multiplex name which includes name of stations. *Fig.3*

For easier explore of station list we can roll or unroll given multiplex.

For this purpose use roll button from MMI control panel.

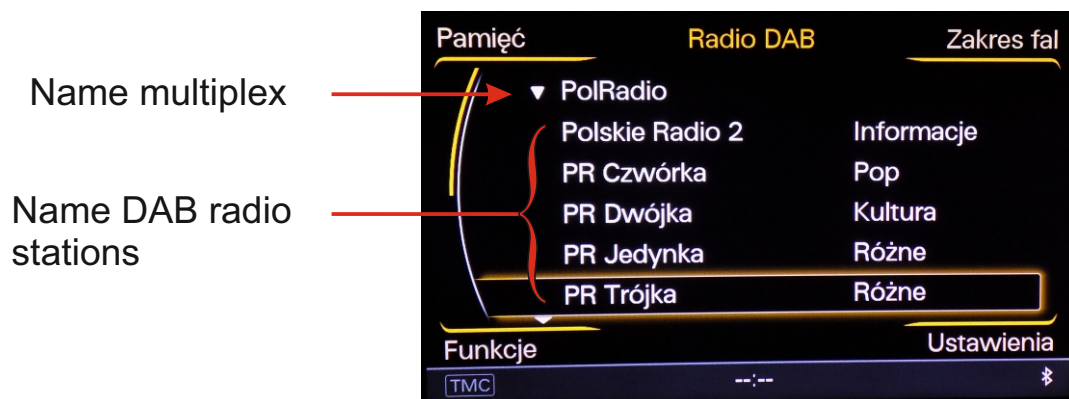



Fig. 3

## 4. Searching process

To start SCAN function, press FUNCTION button **1** , then select and press  button which is shown on display, using knob from MMI control panel **2** . Fig.5, Fig.6

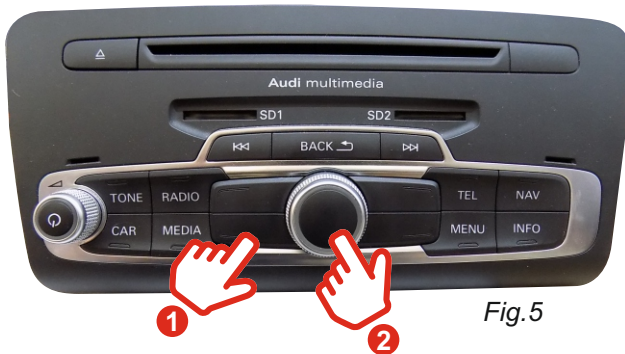


Fig.5



Fig.6

Process of searching and adding new stations can take about 40 sec. After finish of SCAN procedure number of added multiplex will be shown on display **3** , then device will start playing last listening station or first station from list (if last listened station is not available).

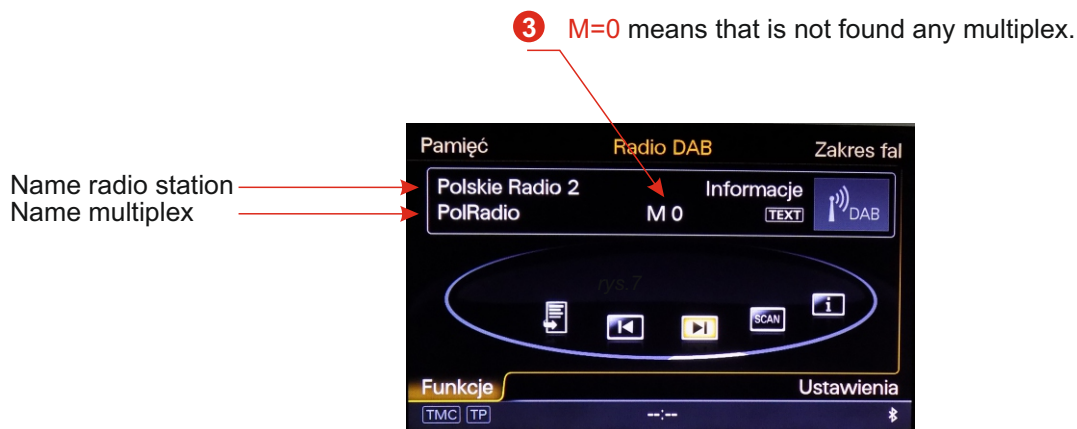


Fig.7

**Warning!** When received station has poor quality Signal, sound can disappear for short moments or completely.