

USER MANUAL

AUDI MMI 2G

1. Introduction

JRDAB-01 device is a DAB/DAB+ radio receiver. It is designed to receive digital radio stations in vehicle equipped with digital sound system. JRDAB-01 supports the "following service" function.

2. Uruchomienie

To start listening of digital radio stations from DAB/DAB+ radio receiver, press the RADIO button ❶ and next press the SOURCE button ❷ on MMI control panel. Then using main knob ❸ of MMI2G system select Digital Radio DAB from list.

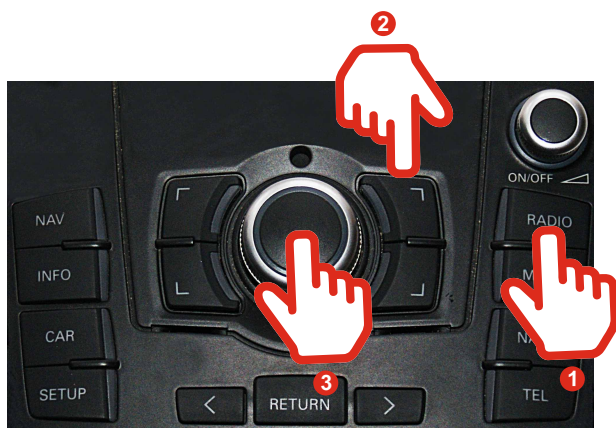


fig.1



fig.2

3. Searching process

WARNING!

At first start up of device run a SCAN function to search new stations and add them to list, using main knob of MMI2G system.

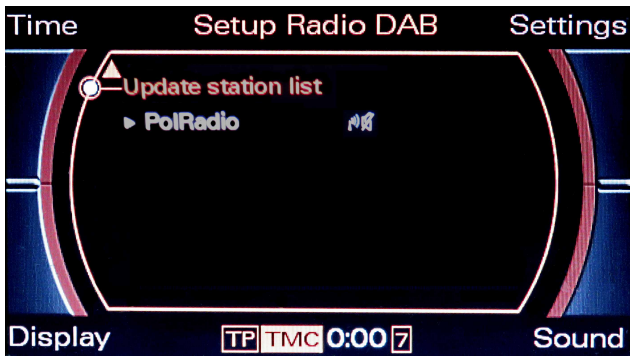


fig.3

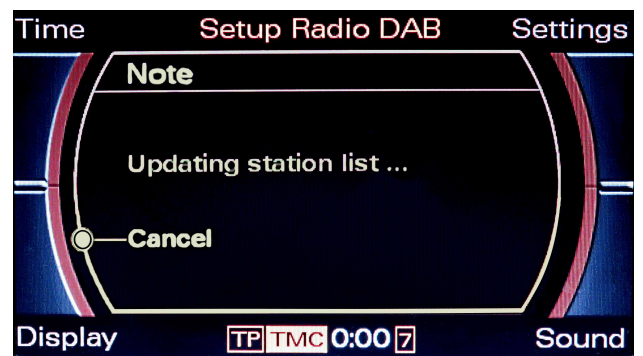


fig.4

3. Selecting and changing

After scan process finish, system shows list of available radio services (fig.5). To select next or previous service use main knob of MMI2G system or buttons under the knob (fig.6).



Sample list of available radio stations fig.5

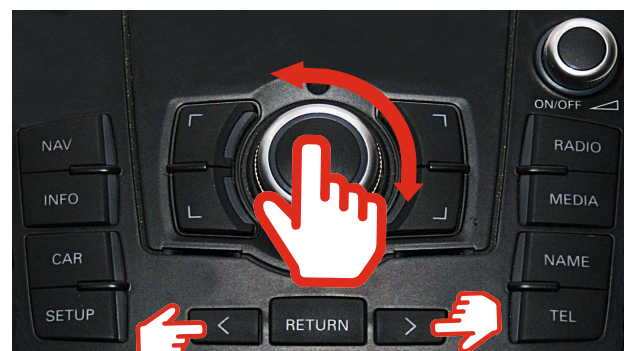


fig.6

3. Service Following

The JRDAB-01 device is equipped with the Service Following function for automatic tracking of the selected radio station within the digital transmitters area DAB/DAB+. An additional option is the ability to activate the function in the MMI unit allowing automatic switching of the selected radio station to receive from FM transmitters after DAB/DAB+ digital signal loss. Radio automatically will return to digital reception when it recovers DAB/DAB+ signal.



fig.7

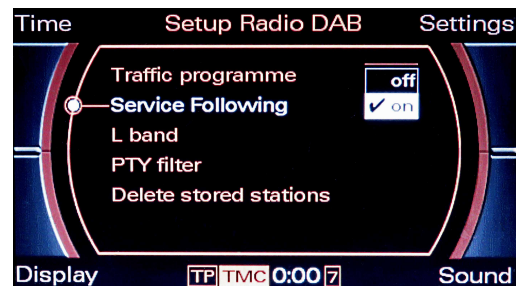


fig.8



An example of the operation of the Service Following function

fig.9