

JRDAB-04

DAB/DAB+ module for CAR

Instructions for changing or adding a logo radio station by the user

The JRDAB-04 module allows you to add or change the logos of saved radio stations by the user if there is no file in the device's internal memory radio station or the user would like to change the displayed "logo" graphic of a radio station. You can add max. 18 "logo" images for your favorites list. In this case, you need to convert your own graphic file (.jpg or .png) to the format (.PNJ) accepted by the JRDAB-04 module.

1. Graphic files of radio stations in .jpg or .png format should be copied to the directory where the "GroupLogoConverter_v1.3" program is located (Fig.1).

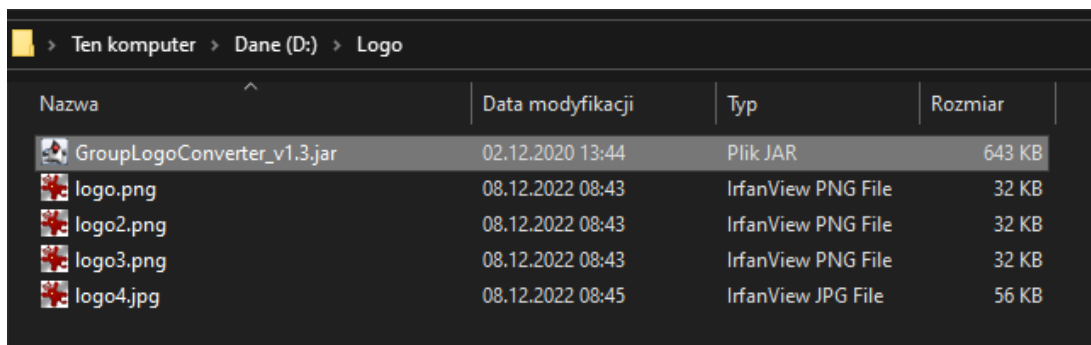


Fig.1

2. After starting the "GroupLogoConverter_v1.3" program and pressing the button *Open folder* (Fig.1), select from the list the folder in which the graphic files are located along with the program (Fig.2).

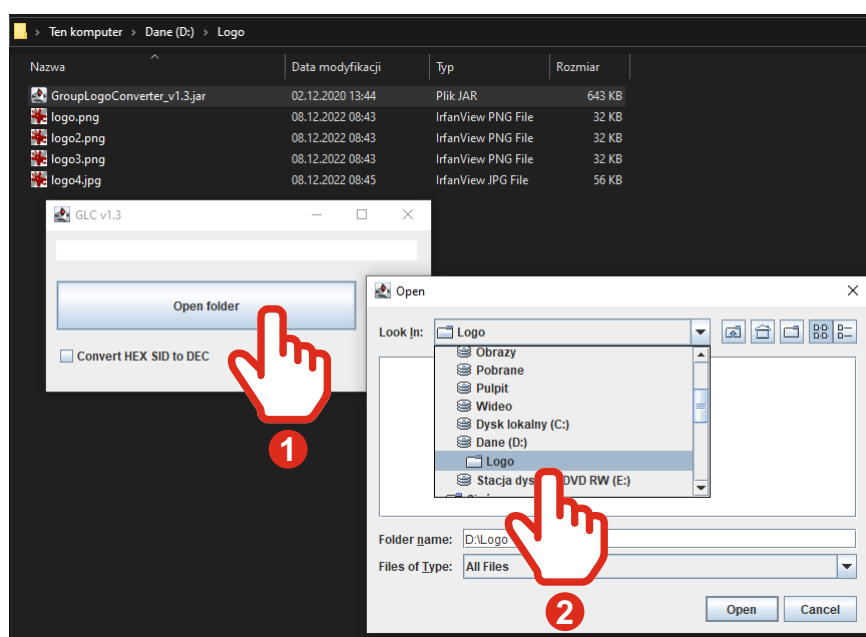


Fig.2

3. Then click on the *Open* button in the program GroupLogoConverter_v1.3 to converted the prepared graphic files of the station to the appropriate format (Fig.3).

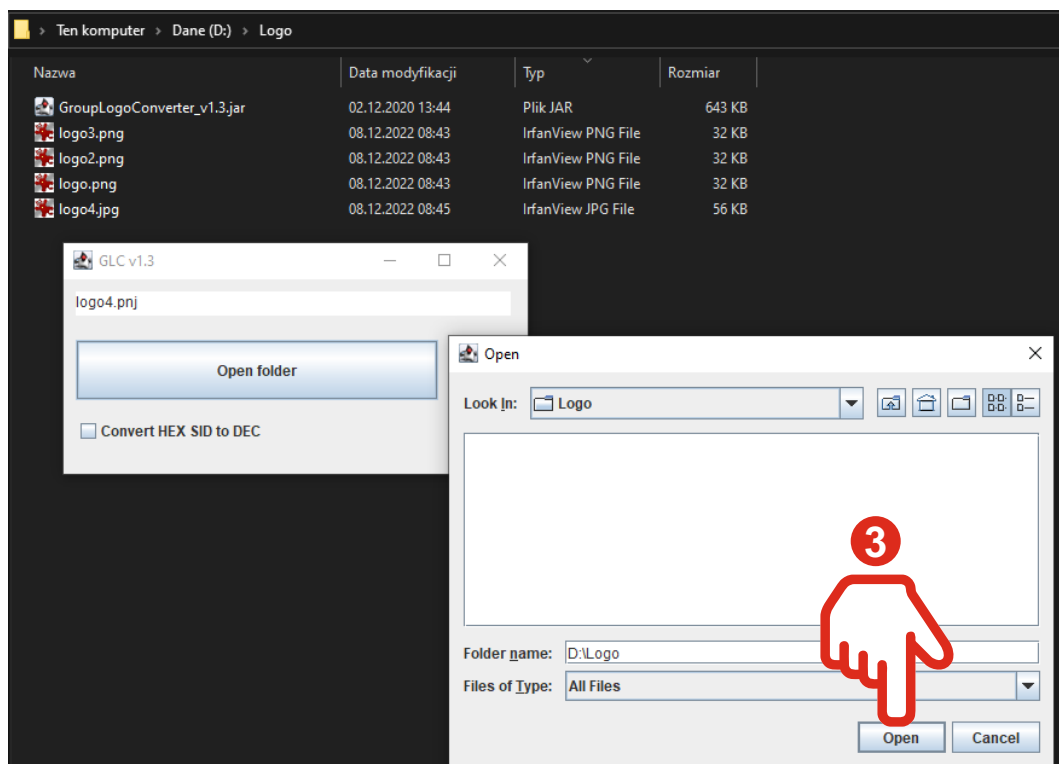


Fig.3

4. After the procedure is completed, the software will inform us about the quantity converted files to the .PNJ format (Fig. 4).

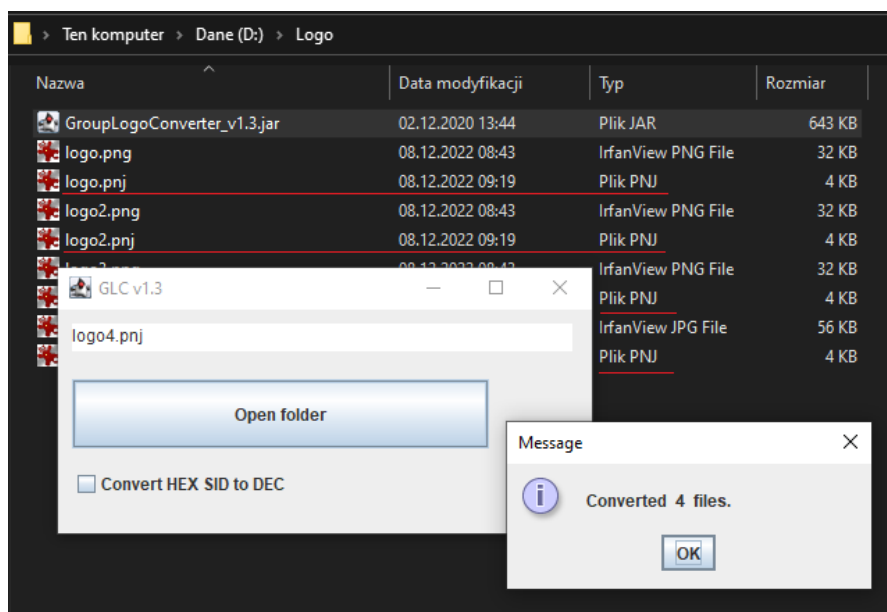


Fig.4

The procedure of uploading the converted image file to the device

5. First, create a directory on the USB drive named **LogoDB**. Then copy the converted image files to this directory in .PNJ format. Connect the USB flash drive prepared in this way to the USB port in the JRDAB-04 module (Fig.5).



Fig.5

6. In the device menu, select *SETUP* and then *STATION LOGOS* (Fig.6).

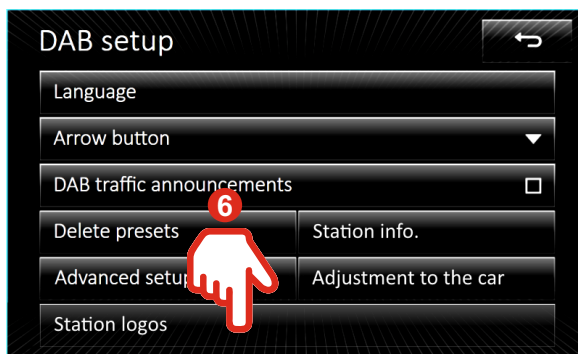
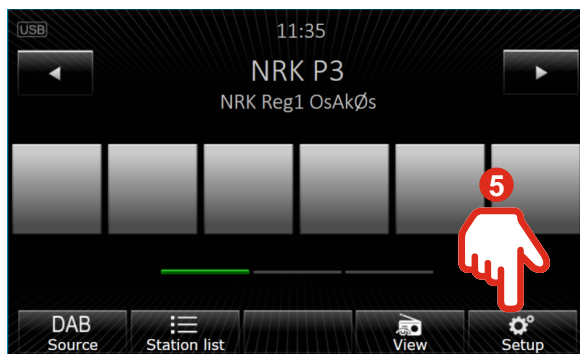


Fig.6

7. Select the station from the list of saved radio stations for which you want to add or change the station logo (Fig.7). The last step will be to choose a specific one image from our list of image files and assigning it to our station radio button *Select* (Fig.8).

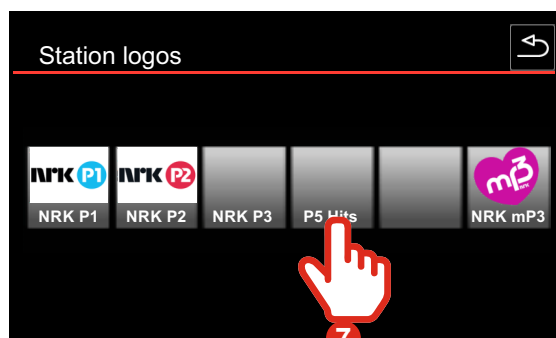


Fig.7

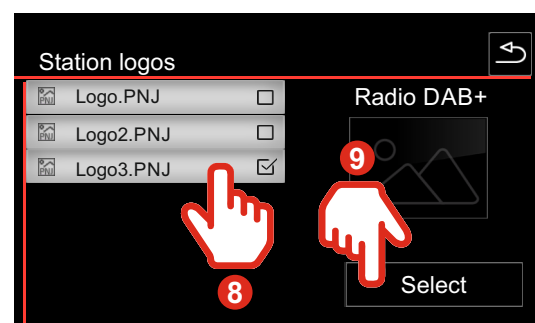


Fig.8