

INSTALLATION MANUAL



Table of Contents

1. INTRODUCTION	2
2. RECOMMENDATIONS	2
3. CONNECTION DIAGRAM OF KIT COMPONENTS	4
4. ANTENNA CONNECTING	5
5. DAB/DAB+ MODULE CONNECTION DIAGRAM	6
6. BASIC TECHNICAL PARAMETERS	7
7. ELEMENTS OF THE SET	7

1. INTRODUCTION

Digital DAB/DAB+ tuner for factory AUDI MMI systems. JRDAB-01 allows to receive digital radio services DAB/DAB+. The device has function of tracking selected service while driving SERVICE FOLLOWING. Fully integrates with MOST optical system.

Easy Installation.

2. RECOMMENDATIONS

Copyright

All assembly and operating instructions are protected by copyright. Distributing documentation via print or online media is only allowed with the prior consent of JUNA electronics.

Important

Please read installation manual very careful and keep it in right way. During installation, pay attention to all relevant aspects related to safety of installation and use of the device.

The priority during the design and production of all devices by JUNA electronics company is security and service comfort. It has been achieved by applying the modern techniques of design and production processes of electronic devices.

Module should be installed in technical workshops by qualified personnel or by people who have experience in this type of installations. Installation of devices by not qualification people can cause injury to persons or damage to property.

It is recommended keep to the general safety rules and pay attention for any threat that can cause of damage to the vehicle.

We advice to mount device in safety place, where it is not exposed for moisture, water or too high temperatures.

2.2 RECOMMENDATIONS

Device should not be installed in places where it could difficult safe driving or operating efficiency of other units installed in vehicle.

The devices can be connected only to 12V. Modules can't be used in vehicles with 24V and higher voltage.

Please note that most of our devices are based on software that may require an update. That's why you should always mount the device in easily available place in the vehicle.

In some countries it may be necessary to check the legal provisions before installation and startup of the device. In the interest of high quality and development of our products, JUNA Electronics reserves the right to make technical changes.

In the case of a warranty claim, the device should be sent back to the seller in original packaging with a detailed description of the problem with attached purchase invoice.

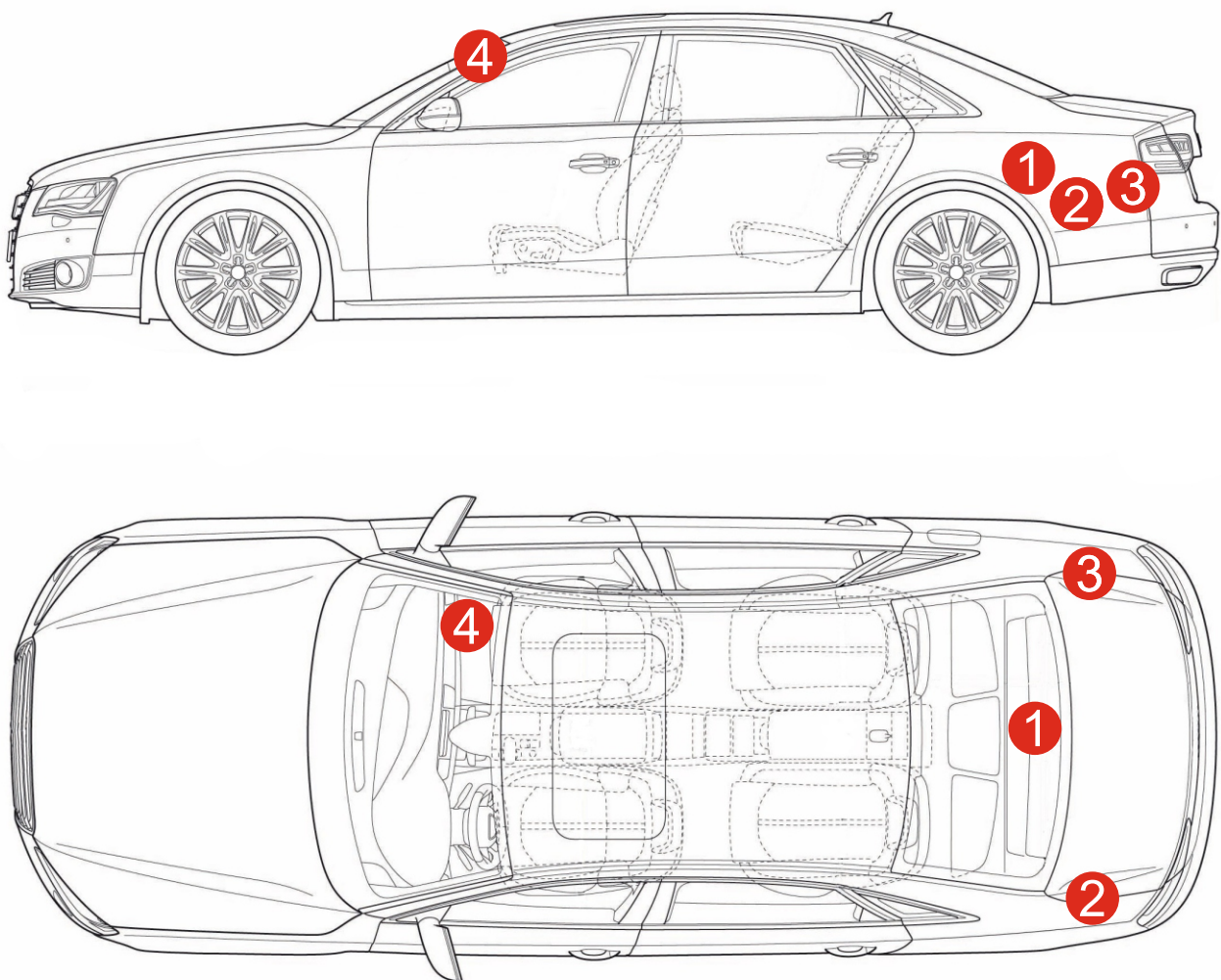
Warranty claims as well as exploitation rights expire due:

- A) Not authorized changes in devices or accessories, which have not been approved or have not been provided by the manufacturer or his partners.
- B) Opening the device's box
- C) Yourself repair the device
- D) Improper use / improper operation of the device
- E) Mechanical damage
- F) Flooding with water or other liquids

3. CONNECTION DIAGRAM OF KIT COMPONENTS

The correct location of the JRDAB-01 assembly components.

1. Connection point for the JRDAB-01 radio module for: *AUDI A8 4H*
2. Connection point for the JRDAB-01 radio module for: *AUDI A4, AUDI A5, AUDI A6, AUDI A7, AUDI A8 4E, AUDI Q5*
3. Connection point for the JRDAB-01 radio module for: *AUDI Q7 4L*
4. Place of mounting the antenna from the set (as an option if not used factory antenna)



Pic.1

4. ANTENNA CONNECTION

The device in addition to the possibility of connecting the DAB/DAB+ antenna included in the set, allow to connect the factory antenna set which includes the factory antenna with the antenna amplifier mounted most often on the tailgate of the luggage compartment. The amplifier is powered from the JRDAB module with 12 voltage.

Important:

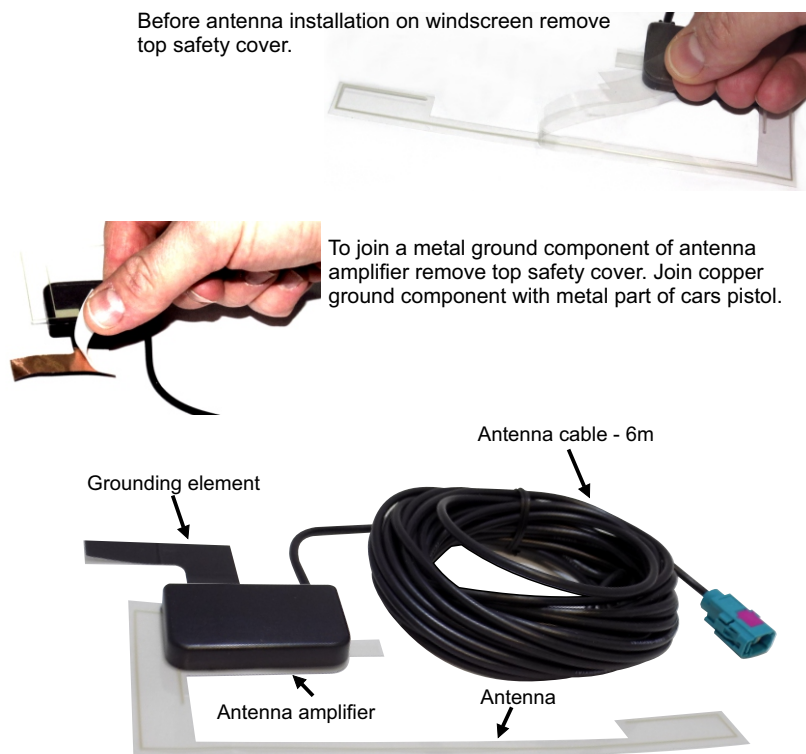
During installation antenna cable along the the body pillar it is necessary to pay attention for side airbags. Cable must be installed in way to not disturb the proper operation of the air curtain.

Installation process:

- 1) Installation of antenna is not recommended when windscreen is very cold
- 2) Antenna should be mounted on windscreen from passenger side
- 3) Carefully remove the passenger side pistol cover
- 4) Clean a place where antenna will be mounted
- 5) Antenna should be mounted 15 cm from top edge and 7 cm from side edge of windscreen
- 6) Ground element of antenna amplifier should touch metal part of post. It can be join to factory painted part of pistol
- 7) Antenna cable should be mounted in way to not interference with side airbag



Example of mounting a DAB/DAB+ antenna



Antenna DAB/DAB+

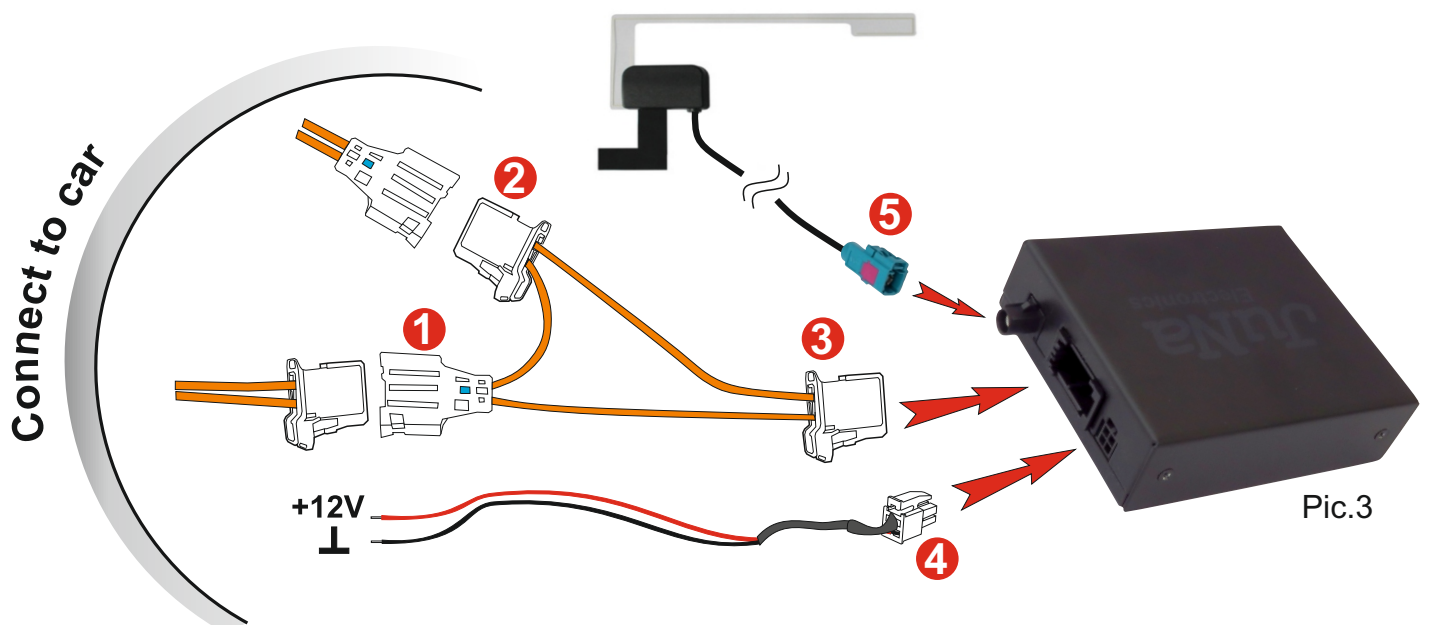
Pic.2

5. DAB/DAB+ MODULE CONNECTION DIAGRAM

1. Turn off the ignition and MMI system in the vehicle
2. Disconnect the original fiber optic connector
3. Connect the K-SW101 socket to the original fiber optic connector ①
4. Connect the K-SW101 plug to the original fiber optic socket ②
5. Connect the K-SW101 plug to the JRDAB-01 module socket ③
6. Connect the W-ZAS101 plug to the JRDAB-01 module socket ④
7. Connect the red and black wires to the QUADLOCK
8. Connect the FAKRA antenna plug to the aerial socket ⑤
9. Turn on the ignition switch and start the vehicle radio
10. Perform the station search process

Important:

We recommend connecting the JRDAB module power supply to QUADLOCK due to the constant power supply of the system.



6. BASIC TECHNICAL PARAMETERS

1. Power supply voltage	12V (+10,5V - 14,8V)
2. Quiescent current	0mA
3. Power consumption with aerial	180mA
4. Power consumption without aerial	145mA
5. Communication and control	MOST bus
6. Housing	Metal
7. Dimensions	90mm x 35mm x 65mm
8. Weight	95g

7. ELEMENTS OF THE SET

1. DAB/DAB+ radio module [JRDAB-01]
2. Connection cables [W-ZAS101]
3. Fiber optic cable- [K-SW101]
4. Antenna [TLG7205]



Pic.4